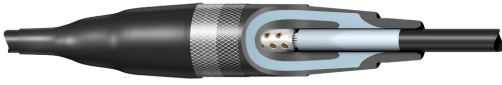
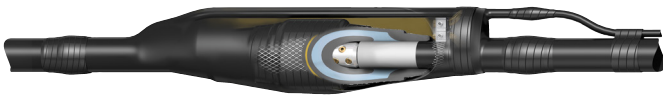


Premolded one-piece cable joint, 52 – 123 kV



JS
Premolded straight cable joint.



JX
Premolded cable joint with screen interruption.

Use

For jointing XLPE- or EPR-insulated 52–123 kV cables with Al- or Cu-conductor.

Standard

Meets the requirements of:

- IEC 60840 including Annex H

Design

The joint body is made of rubber in three layers: a conductive inner layer, an insulating layer and a conductive outer layer in one piece.

The cable joint is supplied with bolt connector and heatshrink outer jacket.

The joint is available in two different basis types

JS Straight cable joint with heat-shrink outer jacket.

JX Cable joint with integrated screen interruption and heatshrink outer jacket.

There are cable joints for different types of cable screen

C For cables with copper wire screen.

P For aluminium laminated cables (APL).

M For cables with metal sheath; lead, corrugated copper/aluminium or corrugated stainless steel.

The following cable data should be stated when ordering, see page 5/1:

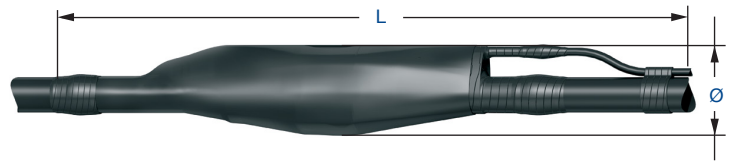
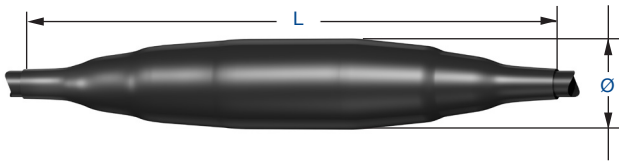
- Voltage
- Diameter over prepared insulation
- Conductor cross section
- Conductor material copper or aluminium
- Diameter of conductor
- Screen, sheath design and cross section
- Overall cable diameter
- Optical fibres integrated in screen

Note:

- A torque wrench, mounting kit, installation cone and installation tool RKM 145 are needed for assembling.
- For diameter over the prepared insulation and conductor cross section, see the table.
- For corrugated aluminium and stainless steel, the flux is not included in the soldering kit. For flux, please contact your local supplier.

Voltage kV	Cable insulation diameter		Conductor cross section mm²
	min mm	max	
52	33	75	150–1600
72	33	75	150–1600
123	46	100	150–2500

Technical specification, tools and accessories



Voltage U_m kV	Insulation diameter mm	Joint size	Net weight kg/kit
52	33–38	JS-A 05210 C/P/M	25
52	38–42	JS-A 05211 C/P/M	25
52	42–47	JS-A 05212 C/P/M	25–30
52	47–54	JS-A 05213 C/P/M	25–30
52	54–63	JS-A 05214 C/P/M	25–30
52	63–75	JS-A 05215 C/P/M	25–30
72	33–38	JS-A 07210 C/P/M	25
72	38–42	JS-A 07211 C/P/M	25
72	42–47	JS-A 07212 C/P/M	25–30
72	47–54	JS-A 07213 C/P/M	25–30
72	54–63	JS-A 07214 C/P/M	25–30
72	63–75	JS-A 07215 C/P/M	25–30
123	46–51	JS-A 12310 C/P/M	28–29
123	51–57	JS-A 12311 C/P/M	28–29
123	57–63	JS-A 12312 C/P/M	30–31
123	63–72	JS-A 12313 C/P/M	30–31
123	72–84	JS-A 12314 C/P/M	32–33
123	84–100	JS-A 12315 C/P/M	32–33

Voltage U_m kV	Insulation diameter mm	Joint size	Net weight kg/kit
52	33–38	JX-A 05210 C/P/M	55–60
52	38–42	JX-A 05211 C/P/M	55–60
52	42–47	JX-A 05212 C/P/M	55–60
52	47–54	JX-A 05213 C/P/M	55–60
52	54–63	JX-A 05214 C/P/M	55–60
52	63–75	JX-A 05215 C/P/M	55–60
72	33–38	JX-A 07210 C/P/M	55–60
72	38–42	JX-A 07211 C/P/M	55–60
72	42–47	JX-A 07212 C/P/M	55–60
72	47–54	JX-A 07213 C/P/M	55–60
72	54–63	JX-A 07214 C/P/M	55–60
72	63–75	JX-A 07215 C/P/M	55–60
123	46–51	JX-A 12310 C/P/M	60–65
123	51–57	JX-A 12311 C/P/M	60–65
123	57–63	JX-A 12312 C/P/M	60–65
123	63–72	JX-A 12313 C/P/M	60–65
123	72–84	JX-A 12314 C/P/M	60–65
123	84–100	JX-A 12315 C/P/M	60–65



RKM 145
Installation tool for cable joints
JS and JX 52–123 kV.



Installation cone
Installation cone for cable
joints JS and JX 52–123 kV.

Designation	Description	Weight kg/unit
RKM 145	Installation tool	31
Installation cone	Installation cone	~ 0.5



OKJ 2 and OKJ 3
Opto fiber kit for cables with integrated optical fibers
in the screen. Used for JS and JX 123 kV only.

Opto fiber kits

Cable joint	Suitable opto fiber kit	Article number
JS 123	OKJ 2	6248.0007
JX 123	OKJ 3	6248.0008

Selection guide for installation cone

Voltage level kV	Insulation diameter mm	Joint size	Installation Cone Article number
52	33–38	JS-A/JX-A 05210 C/P/M	4550.0272
52	38–42	JS-A/JX-A 05211 C/P/M	4550.0273
52	42–47	JS-A/JX-A 05212 C/P/M	4550.0274
52	47–54	JS-A/JX-A 05213 C/P/M	4550.0275
52	54–63	JS-A/JX-A 05214 C/P/M	4550.0276
52	63–75	JS-A/JX-A 05215 C/P/M	4550.0277
72	33–38	JS-A/JX-A 07210 C/P/M	4550.0272
72	38–42	JS-A/JX-A 07211 C/P/M	4550.0273
72	42–47	JS-A/JX-A 07212 C/P/M	4550.0274
72	47–54	JS-A/JX-A 07213 C/P/M	4550.0275
72	54–63	JS-A/JX-A 07214 C/P/M	4550.0276
72	63–75	JS-A/JX-A 07215 C/P/M	4550.0277
123	46–51	JS-A/JX-A 12310 C/P/M	4550.0278
123	51–57	JS-A/JX-A 12311 C/P/M	4550.0279
123	57–63	JS-A/JX-A 12312 C/P/M	4550.0280
123	63–72	JS-A/JX-A 12313 C/P/M	4550.0281
123	72–84	JS-A/JX-A 12314 C/P/M	4550.0282
123	84–100	JS-A/JX-A 12315 C/P/M	4550.0283